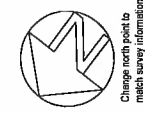
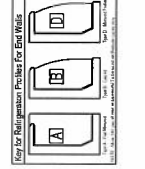
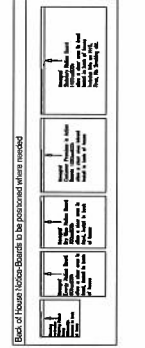


ORDNANCE SURVEY MAP (NTS)

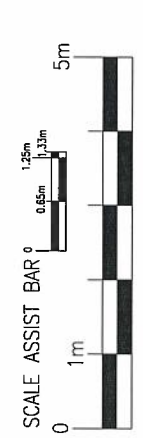
ELEVATIONS



Equality Guidelines
Minimum 800mm photo point
Minimum 1200mm turning circle
Minimum 600mm gap behind the knee
Minimum 600mm gap behind the knee
To apply where possible



BWS CAPACITY BLM
(Scottish stores only)
FLOOR BWS: 00.00m²
KIOSK BWS: 00.00m²
TOTAL BWS: 00.00m²



CUSTOMER
ENTRANCE/EXIT

AUTO DOORS
FIRE EXIT
ready operable (no key)

NEW CERAMIC
WOOD FLOOR

OPEN WINDOWS

NEW CERAMIC
WOOD FLOOR

OPEN WINDOWS

NEW CERAMIC
WOOD FLOOR

OPEN WINDOWS

NEW CERAMIC
WOOD FLOOR

OPEN WINDOWS

NEW CERAMIC
WOOD FLOOR

OPEN WINDOWS

NEW CERAMIC
WOOD FLOOR

OPEN WINDOWS

NEW CERAMIC
WOOD FLOOR

OPEN WINDOWS

NEW CERAMIC
WOOD FLOOR

OPEN WINDOWS

NEW CERAMIC
WOOD FLOOR

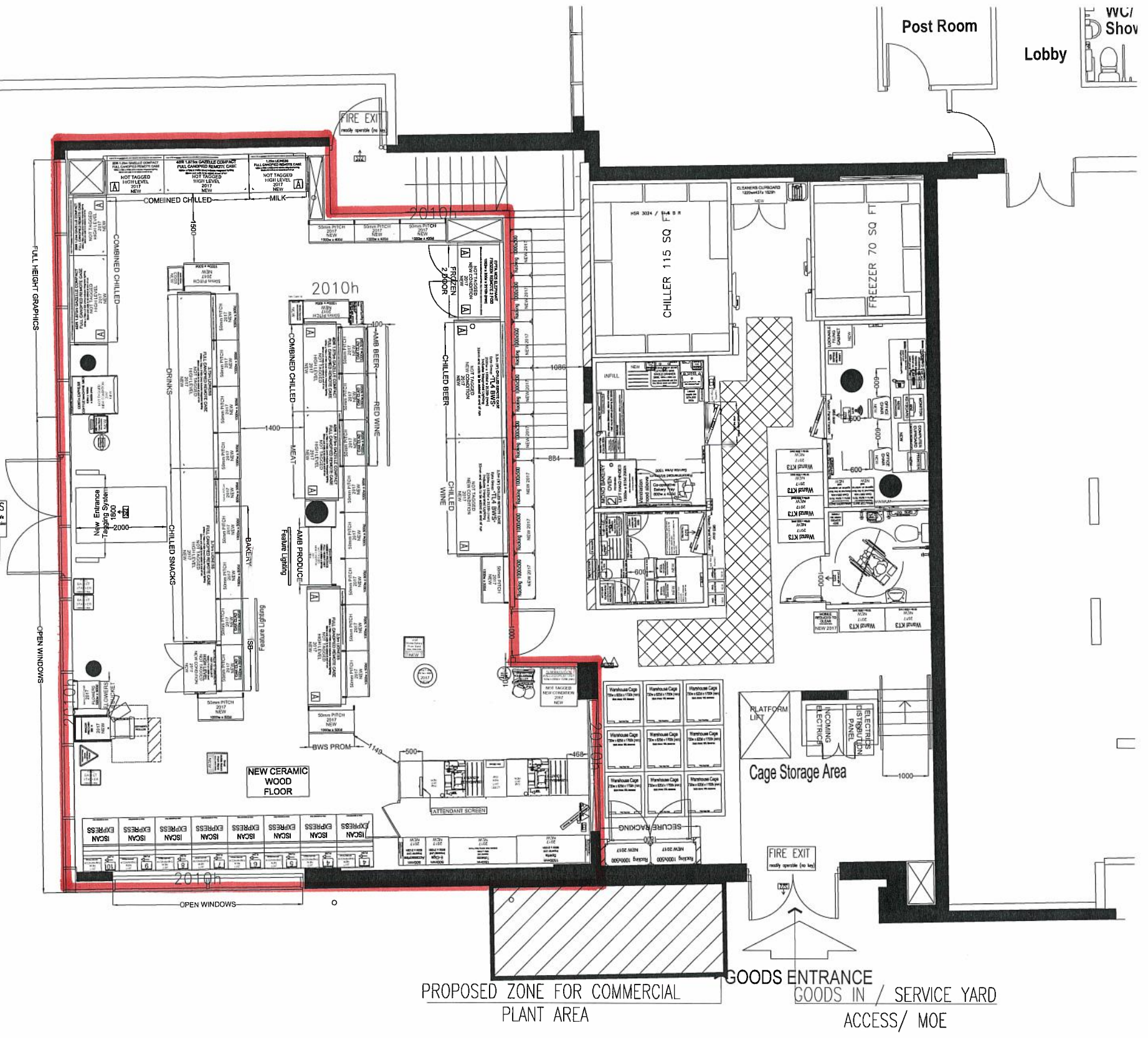
OPEN WINDOWS

NEW CERAMIC
WOOD FLOOR

OPEN WINDOWS

NEW CERAMIC
WOOD FLOOR

OPEN WINDOWS



BACK OF HOUSE - 1:100

SHOP FLOOR - 1:50

Description of Amends				SURVEY OVERLAID			
Date/Hub Number - Wembley Olympic Way - P1F1M0/WI				WEMBLEY, OLYMPIC WAY			
Full draw				25 Olympic Way			
25/05/17/Hub Number - Wembley Olympic Way - P1F2M0/NJ				Wembley			
New shell				London			
6 month review				HAS OFR			
09/08/17/Hub Number - Wembley Olympic Way - P1F3M0/HR				Store Phone No: Store Phone Number			
New Shell overlay (New staircase added)				Format: EC Urban			
1. Revision bubble - have moved entrance further down from centre.				Hub Number:			
2. Shop floor drawn to sales to space				Drawing Information			
3. Back of house redrawn				Brief Description Of Works:			
4. Lift confirmed as a platform lift				Proposed Fixture Layout			
				Latest system drawing			
				Job Originated By:			
				Acquisition Programme 2017			
				Drawing No:		Fixture Rev:	
				Wembley Olympic Way-P1 F5		Macro Rev:	
				The Co-Op		Macro Rev:	
				1 Project Square, Manchester, M10 6AG		Macro Rev:	
				Drawing Status Stage 1: Feasibility CAD		Macro Rev:	

